

Recognition of Current Competency Information

- for holders of overseas qualifications

Welcome

He aha te mea nui o te ao?

Māku e kī ake

He tangata, he tangata, he tangata.

Tihei mauri ora.

What is the most important thing in the world?

I will say

'tis people, 'tis people, 'tis people.

Behold the sneeze of life.

Nau mai, hāere mai.

E te hoa, tēnā koe

Hāere mai ki Aotearoa

Hāere mai ki NZOIA

Kia manāwanui, kia kaha

Ka nui ngā mihi mōu

Tēnā koe.

Welcome, welcome

Friend, greetings

Welcome to New Zealand

Welcome to NZOIA

Be stout hearted, be strong

I wish you all the best

Greetings.

Welcome to outdoor recreation leading, instructing and guiding in Aotearoa-New Zealand.

NZOIA qualifications represent the benchmark standard for people working as leaders, instructors and guides in New Zealand. Therefore, transferring your qualification to a NZOIA one makes professional sense and ensures your competence is well regarded and credible in the New Zealand outdoor community.

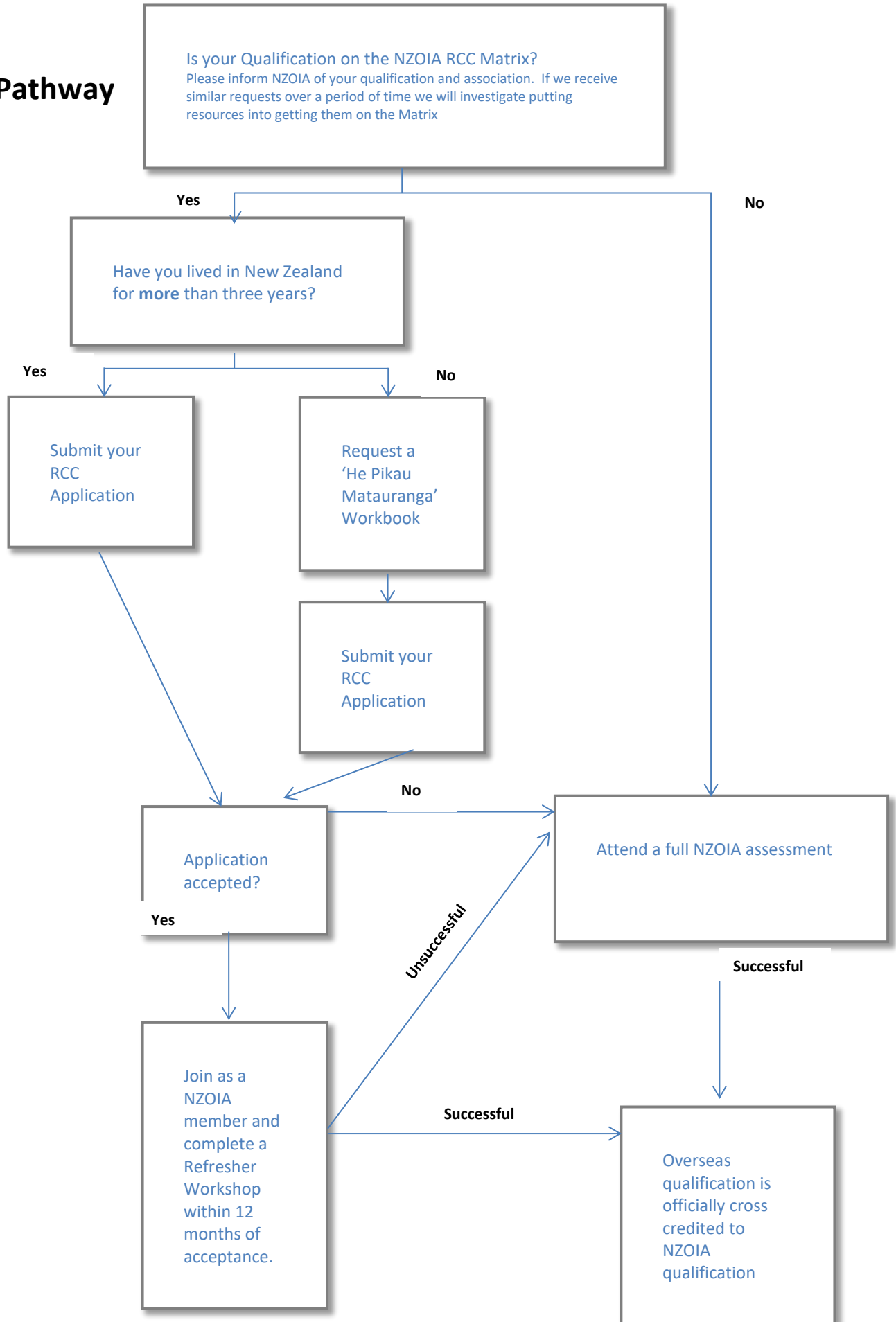
Before you embark on the NZOIA Recognition of Current Competency (RCC) journey, you must ensure:

1. Your qualification is current with the professional body you are cross crediting from
2. Your qualification is on the RCC Matrix
3. You have a current First Aid Certificate
4. You have a logbook including relevant personal and instructional experience over the last three years.

If you have lived in New Zealand for less than three years, you will need to complete a workbook, *He Pīkau Mātauranga*. In English this means 'A Knowledge Backpack' and inside this backpack are a number of topics that will help you to understand, and be part of, the New Zealand outdoor leadership scene.

Once again, welcome, and we trust that this cross credit process will assist you as an outdoor professional working in New Zealand.

RCC Pathway



1. Check

Check if your non-NZOIA qualification is on the NZOIA RCC Matrix on the NZOIA website.

2 He Pīkau Mātauranga

If your qualification is on the matrix and you have lived in New Zealand for less than three years, you need to complete the He Pīkau Mātauranga workbook found on the NZOIA website.

He Pīkau Mātauranga is:

A prerequisite to gaining a NZOIA qualification

Able to be started before or after arrival in New Zealand

A written assignment and is marked by a NZOIA assessor

3. Submit RCC Application

As a minimum you will need to provide:

RCC Application form (found on the NZOIA website)

A copy of your **current** non-NZOIA qualification

A copy of your **current** first aid qualification, i.e. issued within the previous two years

An up to date logbook, particularly detailing the last three years

A completed copy of the He Pīkau Mātauranga (if applicable)

Application fee/s

5. Train in New Zealand

Ensure you have gained personal and instructional experience in New Zealand (this can include being a co-instructor or assistant instructor) before coming to your Refresher Workshop. Our environment can be a lot different than the one in which you gained your qualifications in.

6. Attend a NZOIA Refresher Workshop

If your application is accepted you will need to successfully attend a NZOIA Refresher Workshop within the next 12 months. You may need to complete specific tasks that are identified on the NZOIA RCC Matrix (found on the NZOIA website). It is possible that parts of the NZOIA syllabus may be different from your non-NZOIA qualification. The result of this workshop could be unsuccessful in which case you will need to sit a full NZOIA assessment or successful in which case you will receive a qualification and be registered.

7. Full NZOIA Registration

Once the assessor has confirmed your pass to NZOIA, your full qualification will be granted and registered with NZOIA subject to all relevant fees being paid. The NZOIA website has a database for registered outdoor leaders, instructors and guides in New Zealand.

Recognition of Current Competency Fees

Fees – For qualifications represented on the Matrix

- He Pīkau Mātauranga Course fee \$100 – payable on application
- RCC Application Fee \$100 per qualification – payable on application
- NZOIA Membership Fee \$200 – payable on acceptance of application
- Refresher Workshop fee \$195 per workshop – payable on Refresher Workshop application

Steps to follow

1. Complete RCC and attach relevant documents. Scan and email admin@nzoia.org.nz or post NZOIA, PO Box 1620, NELSON 7040, NEW ZEALAND
2. Request an invoice from NZOIA. Fees can be paid through our website, direct deposit or cheque. Please include your invoice number with the payment for fast tracking.